

Veterinary Endoscope for Insemination & Hysteroscopy



A Revolution in Artificial Insemination

Endoscopy is the best method for diagnosing and treating conditions of the genitourinary tract in bitches. The fine diameter and extended length of the KARL STORZ TCI endoscope allows easy access to the cervix and uterus in bitches of all sizes. An integrated working channel enables the insertion of instruments under direct visualization for procedures such as insemination, biopsy, aspiration, flushing and removal of foreign material.



Prof. Alain FONTBONNE, DVM, PhD, Dip.ECAR, Head of the Centre d'Etude en Reproduction des Carnivores (CERCA) at Alfort National Veterinary College in Paris, France, performs transcervical insemination in a bitch with assistance from Paulo Borges, DVM and Cindy Maenhoudt, DVM, DACT, DECAR. For a listing of available seminars, visit karlstorz.com or contact us at vetglobal@karlstorz.com

Compared to surgical insemination, endoscopic transcervical insemination (TCI) is less painful, less invasive and no post-operative care is needed. TCI is typically performed without sedation, making it easier than other methods.

The KARL STORZ TCI endoscope is also suitable for transcervical insemination in small ruminants and large non-domestic felids. For information about laparoscopic artificial insemination in small ruminants, see SELLSHEET VET 4: *Laparoscopic Artificial Insemination in Sheep & Goats*.

Applications:

- Visual evaluation of the vagina, cervix and uterus
- Transcervical Insemination (TCI) - possibility of several inseminations during the fertile period
- Diagnosis and possible treatment of vaginal defects (septa, strictures, adhesions)
- Visualization of the vaginal wall and cervix during TCI, addressing possible problems (cervicitis) to improve TCI outcomes
- Biopsy of masses in the vagina, cervix and uterus
- Flushing of the uterus to collect samples
- Diagnosis of a retained fetus or placenta (and possible removal)
- Assessment of obstructive dystocia



Insertion of the endoscope into the vagina. The use of a finger over the end of the endoscope during insertion may help to prevent inadvertently introducing the telescope into the urethral opening.

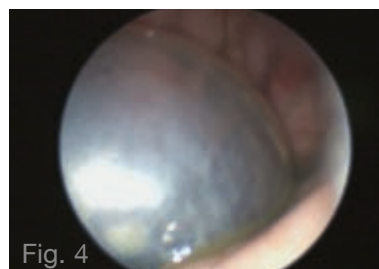
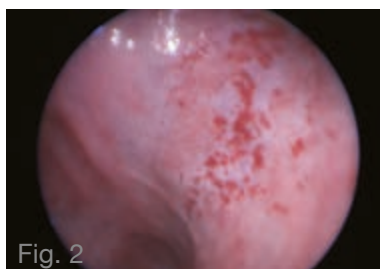
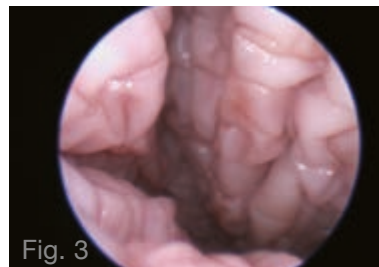
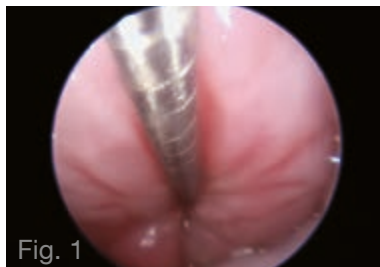


Fig.1: Catheterization of the cervix for artificial insemination or diagnostic procedures, including uterine biopsies

Fig.2: Hysteroscopy: presence of petechiae on the endometrium (possible sign of endometritis)

Fig.3: Vaginal wall during oestrus, showing the crenulations

Fig.4: Visualization of an amniotic sac in the cranial vagina of a bitch at stage 1 of parturition

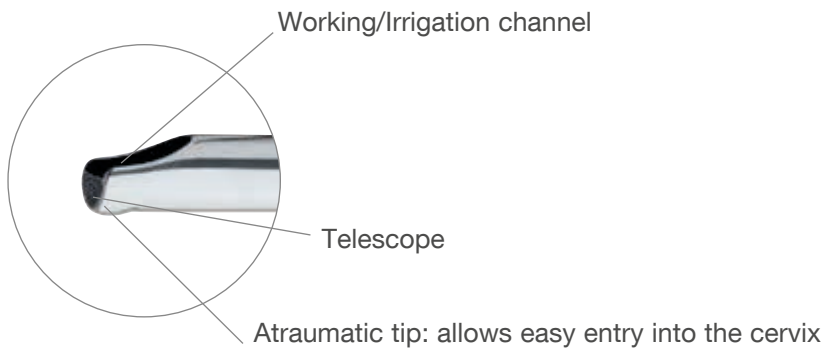
Hysteroscope/TCI Endoscope

Special features:

- **Atraumatic distal sheath with rounded tip**
- **Minimal shaft diameter, extended length facilitates cervical catheterization in small and large patients**
- **The large working channel allows the use of rigid instruments and catheters up to 5 Fr.**
- **2 right angled lateral irrigation connections**
- **The rigid angled eyepiece makes working more comfortable and ensures easy introduction of catheters and instruments without bending or kinking**

Specifications:

Distal tip:	8 Fr.
Sheath:	9.5 Fr., conical, 1 step 9.5-13.5 Fr.
Working channel:	6 Fr., for use with instruments up to 5 Fr.
Telescope:	KARL STORZ Fiberoptic system, direction of view 6°
Length:	43 cm
Eyepiece:	angled, rigid



63002LA **Hysteroscope/TCI Endoscope,**
length 43 cm, **autoclavable**



27001G

The following accessories are included:

- | | |
|---------|-------------------------------------------------------------------|
| 27001G | Instrument Port with Sealing System and Quick Release Lock |
| 27550N | Seal, for Instrument Port 27001G, package of 10 |
| 27001RA | Cleaning Adaptor, for port 27001G |

Optional Instruments



27425F

Forceps for grasping stone fragments, rigid, double action jaws, 5 Fr., length 60 cm



27425P

Forceps for grasping larger stones and fragments, rigid, double action jaws, 5 Fr., length 60 cm



27425Z

Biopsy Forceps, rigid, double action jaws, 5 Fr., length 60 cm

27651UB

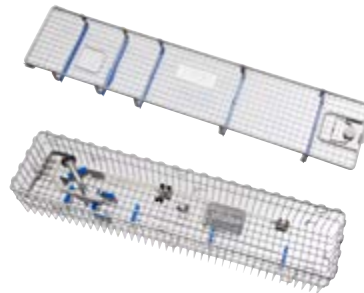
Cleaning Brush, round, flexible, outer diameter 2.2 mm, for working channel diameter 0.8-2 mm, length 60 cm



63002MK

TCI Catheter, 5 Fr., length 70 cm

Wire Tray for Cleaning, Sterilization and Storage

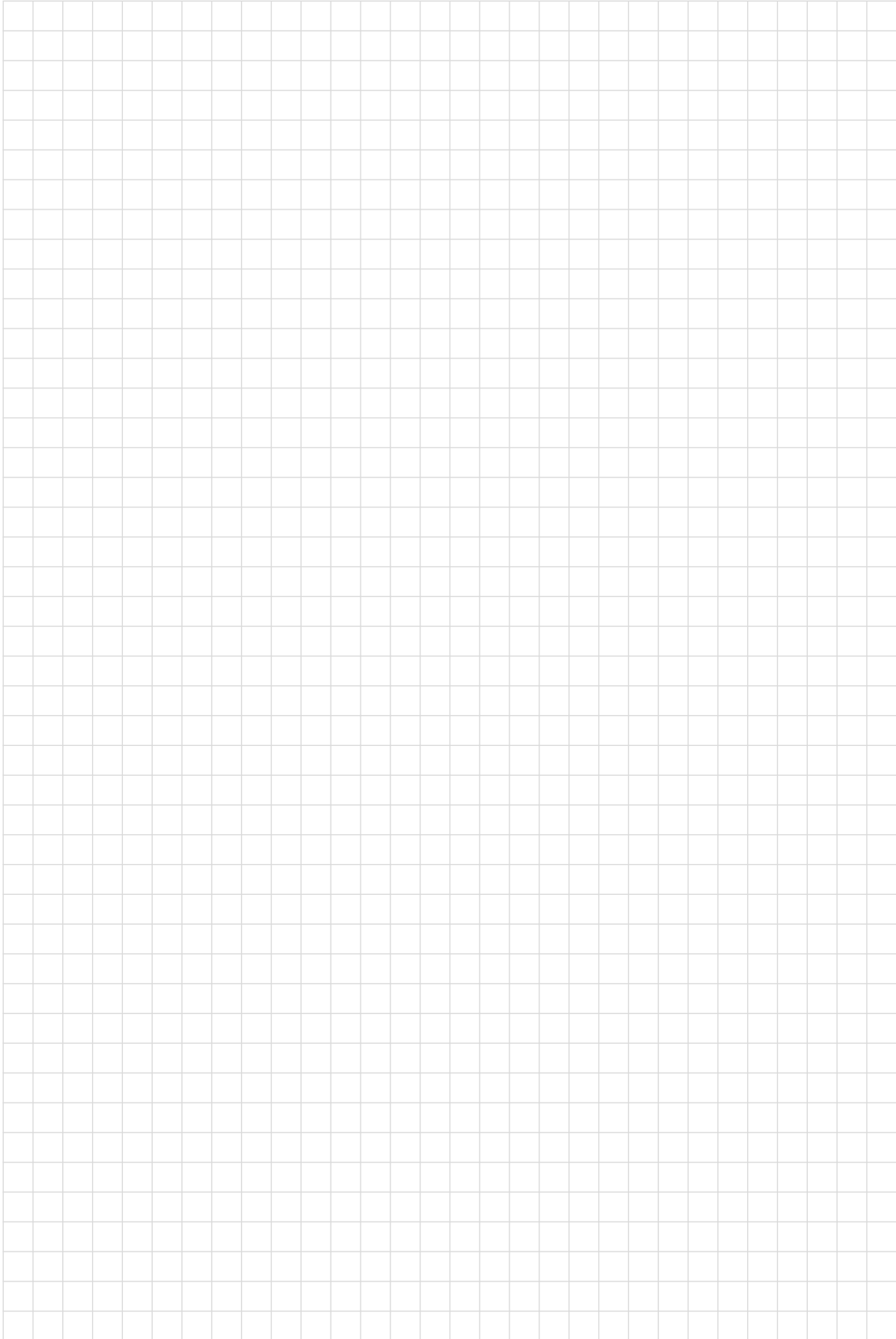


39501X

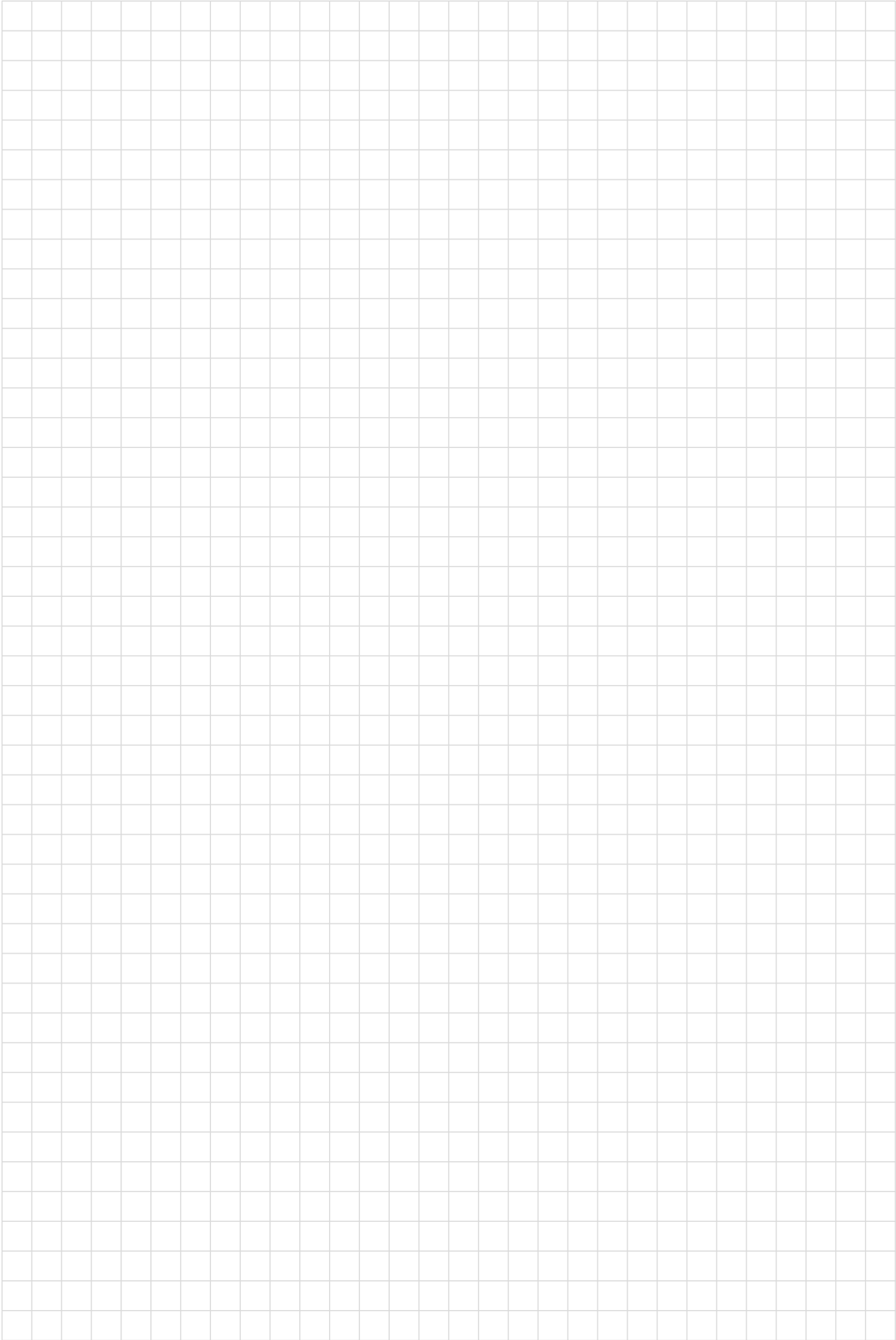
Wire Tray for Cleaning, Sterilization and Storage, with integrated cleaning adaptor for washer-disinfector, with lid, spare parts basket 39501XS and silicone telescope holders, external dimensions (w x d x h): 644 x 150 x 80 mm



Notes



Notes



More than
75
Years

*Shaping the Future
of Endoscopy with you*

STORZ
KARL STORZ—ENDOSKOPE

THE DIAMOND STANDARD

KARL STORZ SE & Co. KG
Dr.-Karl-Storz-Straße 34, 78532 Tuttlingen/Germany
Postbox 230, 78503 Tuttlingen/Germany
Phone: +49 7461 708-0
Fax: +49 7461 708-105
E-Mail: info@karlstorz.com

www.karlstorz.com